

## Restoring Bedsteads of yesterday.... for generations of tomorrow

On average we spend more than one third of our lives sleeping. Beds have inspired furniture designers across centuries to produce a functional yet appealing piece of bedroom furniture, mainly using timber. However, in the early 1800's, amongst concerns about the outbreak of disease and concern of hygiene and bed bugs, there was a new age dawning - the Industrial Revolution was well underway with the development of the steel industry including the design and production of Brass and Iron Beds or Bedsteads.

Thousands of brass and iron bedsteads were made, sold and then shipped about the world as people immigrated to other countries, where other brass and iron bedstead factories were begun. The Brass Bedstead Industry becoming so large, the employees were able to form their own Brass Bedstead Union to represent them. These artisans were mainly men, they worked in extreme temperatures and difficult conditions.



Black and Brass Mother of Pearl restoration

In the early 1900's war would reshape the steel industry again, as factories were assigned to the war effort and any available iron including brass were requested from the country to aid the war effort, they were collected and melted down and remade into whatever the War Departments required. After this bed apprenticeships were no longer offered. However, never would they have believed that over 100 years later, the brass beds they produced would become the passion for a young boy.

### Continuing the bed artisan tradition



Custom designed daybed with cameo feature

In a small Queensland country town, a 13 year old boy was walking down the street past an old shed at the rear of the local pub, and noticed the publican was clearing everything out, amongst the rubbish were some old iron and brass beds. He asked what was happening, he was told the shed was going to be demolished and all the old stuff dumped. So he asked if he could take the beds and was told as long as he removed them all by the next day. So the boy went home, returning with his only mode of transport – his pushbike and set about the task of removing the beds and bed pieces – pedalling between the shed and his home taking them home piece by piece – as you can imagine quite a sight in a small country town, but by night he had the job done.

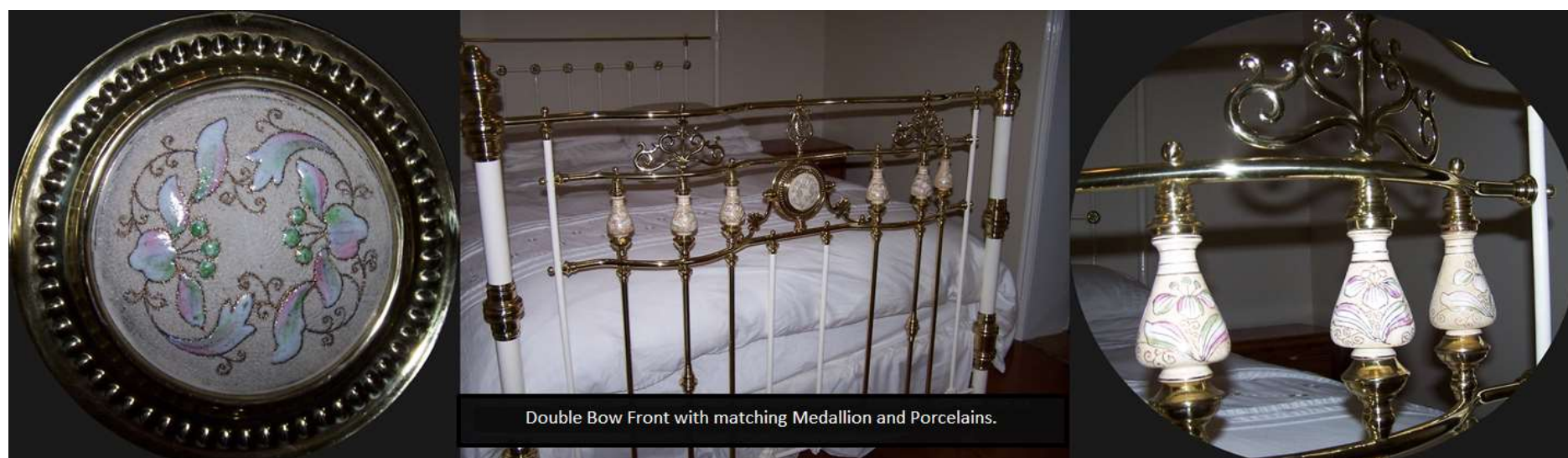
Initially under the guidance of his grandfather and then working as a weld/metalworker and now over 30 years later, he has developed and taught himself the necessary skills of the original brass bed artisans:

- ✂ understanding how to care and work with the old cast iron framework,
- ✂ how to treat, hand rub and polish the brass, allowing it to shine again
- ✂ how to handle and clean the fine porcelain spindles and decorative centres made of porcelain or glass,
- ✂ how to cut and glue Mother of Pearl which was long gone only leaving an outline of its original design.

This is exactly what led a boys' hobby to our specialised Antique Brass Bed business – Timeless Antiques. **What sets Timeless Antiques apart is that our business is dedicated to Antique Brass Bed Restorations and Brass Bed restorations and sales.** We are strongly committed to encouraging families to take the old family bed out from where it has been tucked away in the shed, back paddock, under the rafters or even being used as a poddy calf feeder, (yes this is true and we have the photos to prove it) and bring them to us so we can restore them for future generations to enjoy.

We also believe in old fashioned service, talking and communicating to our clients by phone and email whilst their restoration is being done. So if you are looking for quality and service – welcome to Timeless Antiques, please explore our webpage [www.timelessantiques.com.au](http://www.timelessantiques.com.au) and if you would like to purchase an antique brass bed or would like to have Grandma's brass bed restored phone or email us, we will be able to assist you.

*Timeless Antiques – Taking Care of Furniture of yesterday for generations of tomorrow*



Double Bow Front with matching Medallion and Porcelains.